



## Plant Communities

At 5thWorld, when we approach planting design, we strive to adopt the principles of natural systems to reduce the amount of work and inputs to maintain a healthy planting once established.

The following plant sheets are examples of how we created edible forest plant communities that are tailored to particular ecological regions throughout North America. As they contain terrestrial and climatic conditions for growing a certain kind of vegetation, the ecological region serves as an ideal backdrop for creating tailored planting designs for your specific goals while benefiting from the stability of natural systems.

As part of our design process, we develop a deep understanding of your ecological context to create relevant and lasting ecosystems that address your goals.



**5thWorld**

PLANT COMMUNITIES

Mulberry-Pecan-Pawpaw

## E-D1 | MULBERRY-PECAN-PAWPAW

Location	Central Kentucky
Ecoregion	Crawford Mammoth Cave Uplands
Moisture Regime	Moderate to Moist
Nutrient Regime	Rich

### PLANT COMMUNITY

	Qty	Botanical Name	Common Name	Comments
<b>Tall Trees</b>				
	2	<i>Carya illinoensis</i>	Pecan	Edible nuts
	1	<i>Morus rubra</i>	Red Mulberry	Edible fruit
<b>Trees</b>				
	3	<i>Pyrus bretschneideris</i>	Asian Pear	Edible fruit
	2	<i>Diospyros virginiana</i>	Common Persimmon	Edible fruit
	1	<i>Prunus 'Mount Royal'</i>	Plum—Mount Royal	Edible fruit, self fertile
	1	<i>Gleditsia triacanthos</i>	Honeylocust	Soil fertility, edible pods
<b>Tall Shrubs</b>				
	19	<i>Asimina triloba</i>	Common Pawpaw	Edible fruit
	16	<i>Corylus americana</i> x <i>Corylus avellana</i>	Hazelbert	Edible nuts
	13	<i>Amelanchier arborea</i>	Common Serviceberry	Edible fruit
	9	<i>Cornus mas</i>	Cornelian Cherry	Edible fruit
	6	<i>Sambucus nigra</i>	Elderberry—Black	Edible, medicinal fruit, flowers
<b>Small Shrubs</b>				
	63	<i>Ribes rubrum</i>	Currant—Red	Edible fruit
	50	<i>Rubus fruticosus</i> Chester	Chester Blackberry	Edible fruit
	38	<i>Ribes nigrum</i>	Currant—Black	Edible fruit
	38	<i>Ribes hirtellum</i>	Gooseberry	Edible fruit
	105	<i>Rubus 'Fall Gold'</i>	Raspberry—Fall Gold	Edible fruit



This community is modelled after a vegetation community that grows natively in the Crawford Mammoth Cave Uplands region of Kentucky. It is aimed at producing food in the form of fruits and nuts. It features many of the edible plant species that are already adapted to the ecological region.



**5thWorld**

PLANT COMMUNITIES

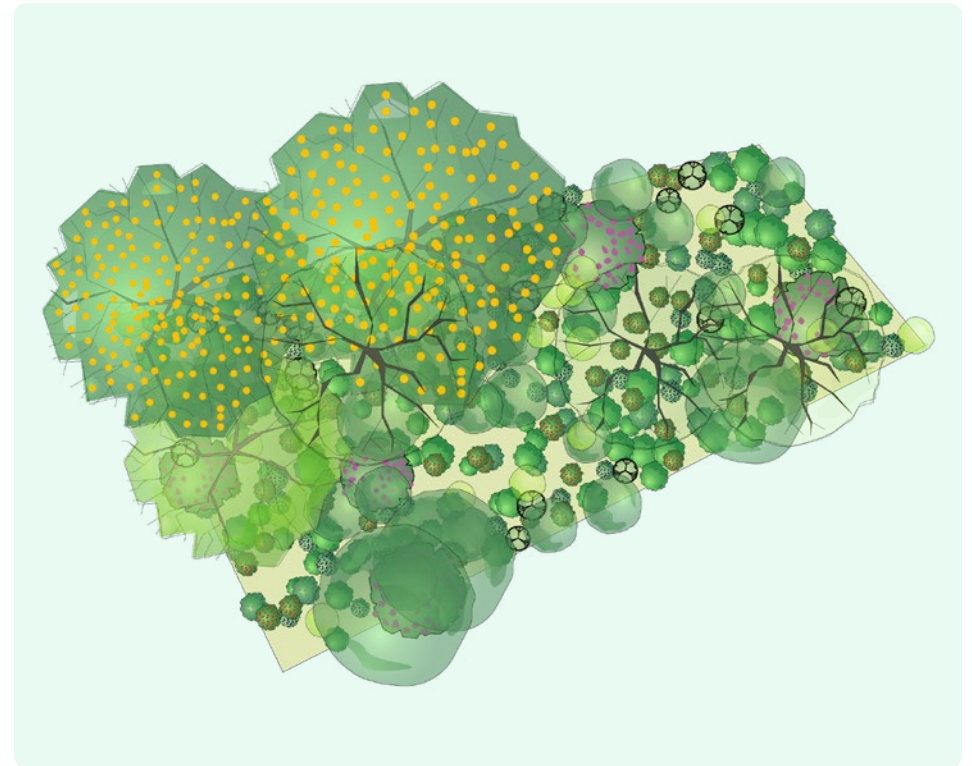
Hickory-Walnut-Hazel

## E-D1 | HICKORY-WALNUT-HAZEL

Location	Central Maryland
Ecoregion	Piedmont Uplands
Moisture Regime	Moderate to Moist
Nutrient Regime	Moderate to Rich

### PLANT COMMUNITY

	Qty	Botanical Name	Common Name	Comments
<b>Tall Trees</b>				
	1	<i>Juglans nigra</i>	Black Walnut	Edible nuts
	1	<i>Carya ovata</i>	Shagbark Hickory	Edible nuts
	1	<i>Morus rubra</i>	Red Mulberry	Edible fruit, juglone buffer
<b>Trees</b>				
	3	<i>Pyrus bretschneideris</i>	Asian Pear	Edible fruit
	2	<i>Diospyros virginiana</i>	Common Persimmon	Edible fruit
	1	<i>Prunus 'Mount Royal'</i>	Plum—Mount Royal	Edible fruit, self fertile
	1	<i>Gleditsia triacanthos</i>	Honeylocust	Soil fertiltiy, edible pods
<b>Tall Shrubs</b>				
	22	<i>Corylus americana</i> x <i>Corylus avellana</i>	Hazelbert	Edible nuts
	19	<i>Asimina triloba</i>	Common Pawpaw	Edible fruit
	16	<i>Castanea pumila</i>	Chinkapin	Edible nuts
	6	<i>Amelanchier arborea</i>	Common Serviceberry	Edible fruit
<b>Small Shrubs</b>				
	63	<i>Ribes rubrum</i>	Currant—Red	Edible fruit
	63	<i>Vaccinium corymbosum 'Patriot'</i>	Patriot Early Season Blueberry	Edible fruit
	50	<i>Rubus fruticosus</i> Chester	Chester Blackberry	Edible fruit
	38	<i>Ribes nigrum</i>	Currant—Black	Edible fruit
	38	<i>Ribes hirtellum</i>	Gooseberry	Edible fruit



This community is modelled after a vegetation community that grows natively in the Piedmont Uplands region of Maryland. It is aimed at producing food in the form of fruits and nuts. It features many of the edible plant species that are already adapted to the ecological region.



**5thWorld**

PLANT COMMUNITIES

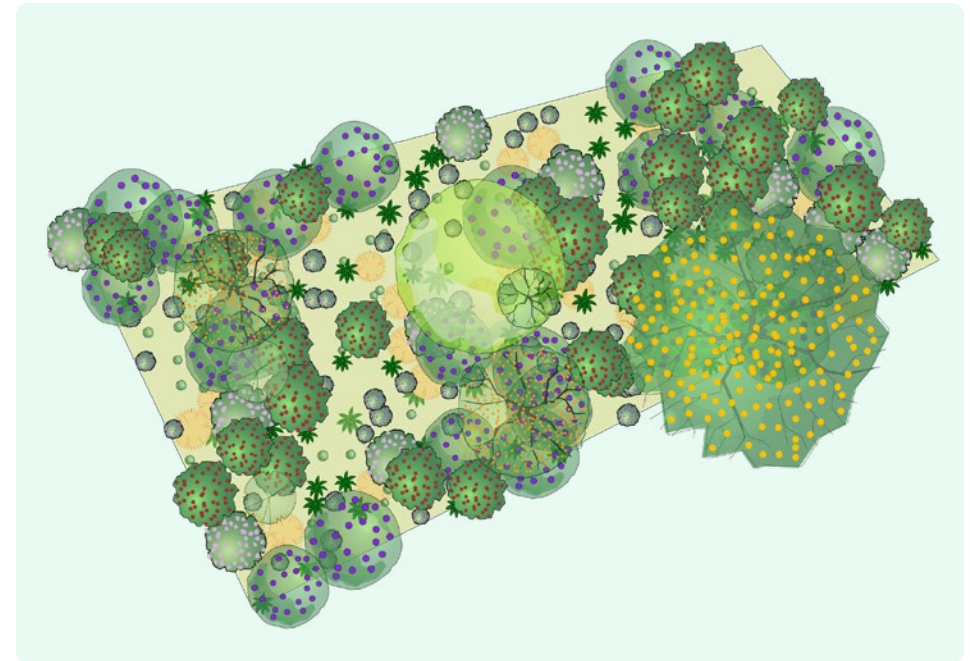
Citrus-Avocado-Pomegranate

## E-D1 | CITRUS-AVOCADO-POMEGRANATE

Location	Central Florida
Ecoregion	Pine Flatwoods
Moisture Regime	Moderately Moist
Nutrient Regime	Poor to Moderate

### PLANT COMMUNITY

	Qty	Botanical Name	Common Name	Comments
<b>Trees</b>				
	2	Citrus 'Bream Tarocco'	Bream Tarocco Orange	Edible fruit
	2	Persea americana 'Brogden'	Brogden Avocado	Cold hardy variety, edible fruit
	1	Diospyros virginiana	Common Persimmon	Edible fruit
	1	Morus nigra	Dwarf Mulberry	Edible fruit
	1	Lysiloma latisiliquum	False Tamarind	Soil fertility
<b>Tall Shrubs</b>				
	28	Punica granatum 'Wonderful'	Wonderful Pomegranate	Edible fruit
	22	Prunus angustifolia	Chickasaw Plum	Edible fruit
	13	Vaccinium arboreum	Sparkleberry	Edible fruit
<b>Small Shrubs</b>				
	76	Vaccinium darrowii	Darrow's Blueberry	Edible fruit
	63	Ananas 'Elite Gold'	Elite Gold Pineapple	Edible fruit
	63	Asimina pygmaea	Dwarf Pawpaw	Edible fruit
	38	Saccharum officinarum	Sugarcane	Edible stem
	13	Serenoa repens	Saw Palmetto	Edible, medicinal fruit



This community is modelled after a vegetation community that grows natively in the Pine Flatwoods ecological site in Orange County, Florida. It is suitable if your goal is to create a perennial edible landscape that, once established, requires minimal to no inputs to survive. It features many of the edible plant species that are already adapted to the ecological region. The exception is the citrus tree, which may require soil amendment, and additional water during drought.



**5thWorld**

PLANT COMMUNITIES













**Insectary Power**

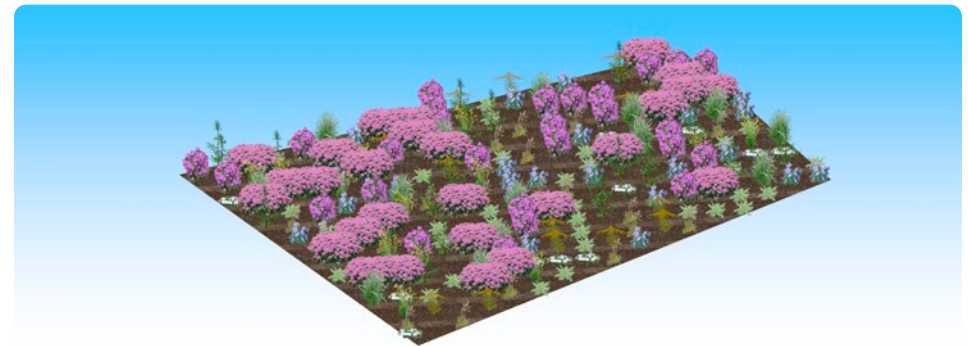
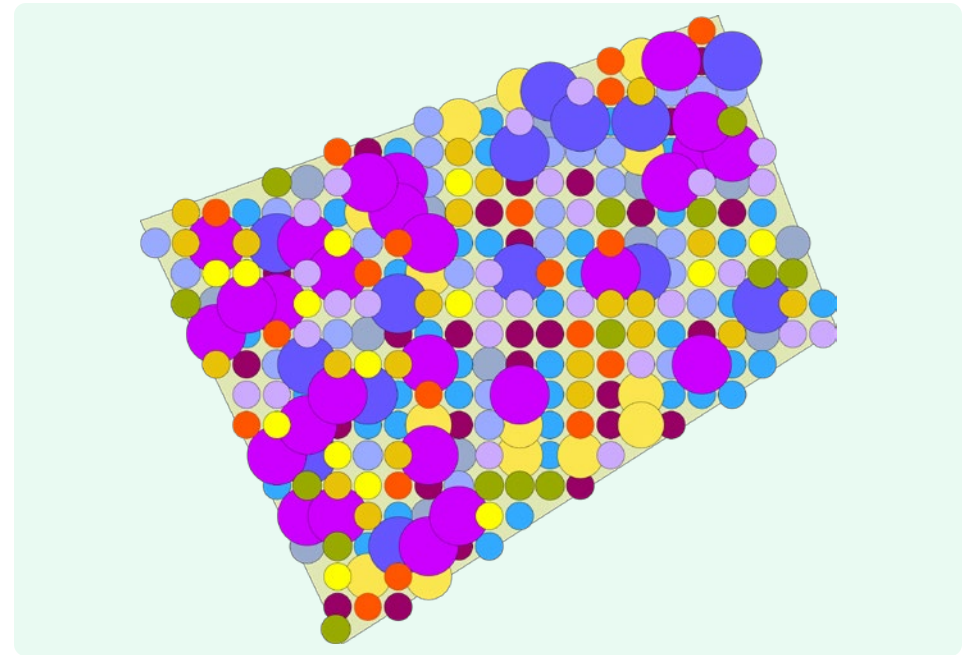


## M-B1 | INSECTARY POWER 1

Location	Central & Southwest Alberta
Ecoregion	Parkland
Moisture Regime	Submesic to Mesic
Nutrient Regime	Moderate to Rich

## PLANT COMMUNITY

	Qty	Botanical Name	Common Name	Comments
<b>Herbs</b>				
	27	<i>Anemone patens</i>	Prairie Crocus	Spring blooming
	14	<i>Thermopsis rhombifolia</i>	Golden Beans	Spring blooming
	14	<i>Fragaria virginiana</i>	Strawberry—Wild	Spring blooming, edible fruit
	19	<i>Arnica chamissonis</i>	Arnica—Meadow	Summer blooming
	22	<i>Zizia aurea</i>	Golden Alexanders	Late spring blooming
	27	<i>Monarda fistulosa</i>	Bergamot	Summer blooming
	14	<i>Agastache 'Blue Fortune'</i>	Blue Fortune Hyssop	Summer blooming
	27	<i>Aster conspicuus</i>	Aster—Showy	Late summer to fall blooming
	14	<i>Solidago canadensis</i>	Goldenrod—Canada	Late summer to fall blooming
	41	<i>Polemonium pulcherrima</i>	Jacob's Ladder—Showy	Spring blooming
	27	<i>Geum triflorum</i>	Prairie Smoke	Late spring blooming
	14	<i>Agrostis scabra</i>	Tickle Grass	



This community is modelled after a vegetation community that grows natively in meadow areas of the Parkland ecological region in Alberta. It is designed to create a pollinator habitat for native insects, as well as aesthetically pleasing meadows that, once established, requires minimal to no inputs to survive. It features many flowering perennial plant species that are already adapted to the ecological region, but also contains some expressly visually appealing species suited for the site conditions.



**5thWorld**

PLANT COMMUNITIES

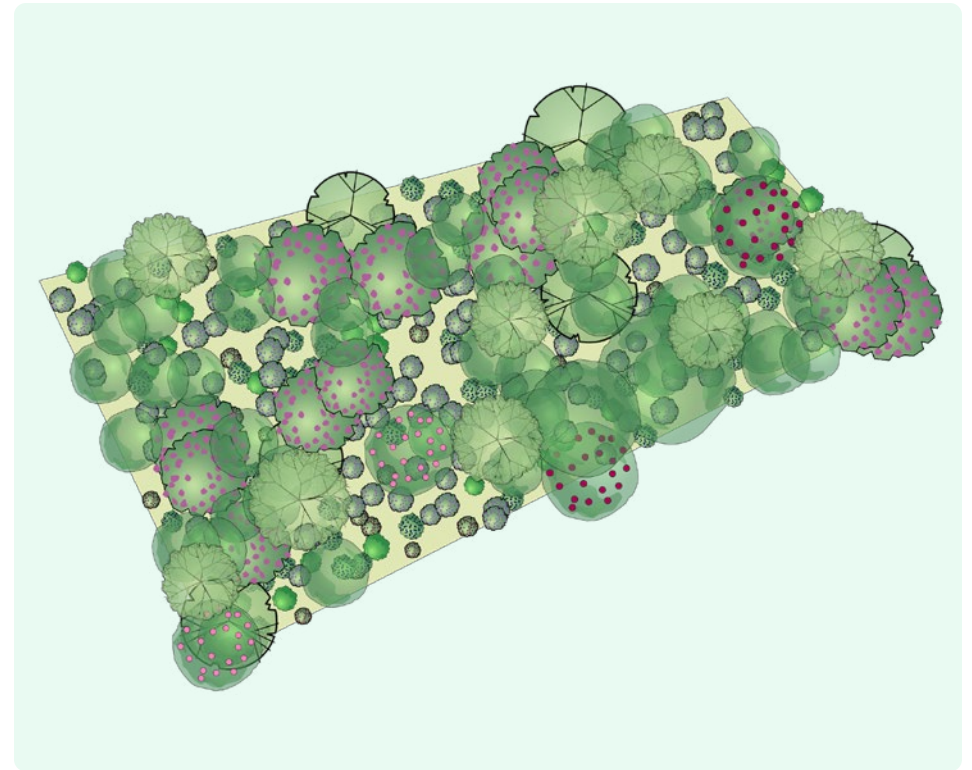
Apple-Pawpaw-Honeyberry

## E-D1 | APPLE-PAWPAW-HONEYBERRY

Location	Southern Ontario
Ecoregion	Lake Simcoe-Rideau
Moisture Regime	Moderate to Moist
Nutrient Regime	Moderate to Rich

### PLANT COMMUNITY

Qty	Botanical Name	Common Name	Comments
<b>Trees</b>			
9	<i>Malus x domestica</i>	Apple	Edible fruit
2	<i>Pyrus ussuriensis</i>	Pear—Multigraft	Edible fruit
2	<i>Prunus 'Pembina'</i>	Plum—Pembina	Edible fruit
2	<i>Prunus nigra</i>	Plum—Canada	Edible fruit, key pollinizer for other plums
<b>Tall Shrubs</b>			
44	<i>Asimina triloba</i>	Common Pawpaw	Edible fruit
13	<i>Amelanchier arborea</i>	Common Serviceberry	Edible fruit
6	<i>Cornus mas</i>	Cornelian Cherry	Edible fruit
<b>Small Shrubs</b>			
126	<i>Lonicera caerulea</i>	Honeyberry	Edible fruit
63	<i>Rubus 'Wyoming Black'</i>	Raspberry—Wyoming Black	Edible fruit
38	<i>Ribes hirtellum</i>	Gooseberry	Edible fruit
25	<i>Aronia melanocarpa 'Autumn Magic'</i>	Chokeberry—Autumn Magic	Edible fruit



This community is modelled after a vegetation community that grows natively in the Lake Simcoe-Rideau ecoregion of Ontario. It is aimed at producing food in the form of fruits. It features many of the edible plant species that are already adapted to the ecological region.



**5thWorld**

PLANT COMMUNITIES

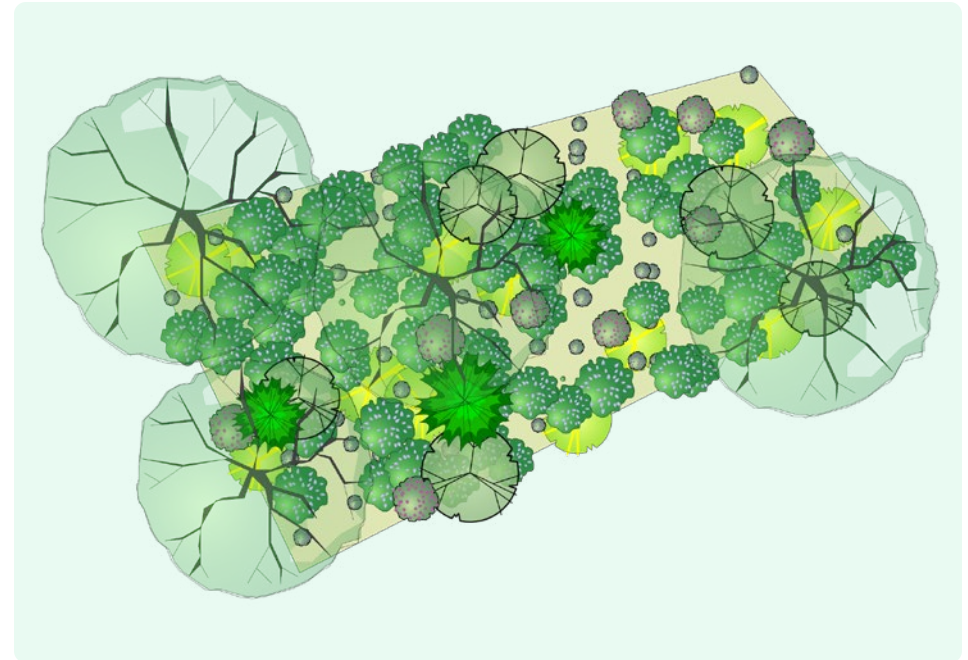
Oak-Salal-Dogwood

## E-E1 | OAK-SALAL-DOGWOOD

Location	Western Coast BC
Ecoregion	Coast Douglas Fir
Moisture Regime	Dry to Modertately Moist
Nutrient Regime	Poor to Moderate

## PLANT COMMUNITY

	Qty	Botanical Name	Common Name	Comments
<b>Trees</b>				
	4	<i>Quercus garryana</i>	Garry Oak	Edible nuts, heritage value
	3	<i>Pinus cembra</i>	Swiss Stone Pine	Edible nuts
<b>Tall Shrubs</b>				
	9	<i>Amelanchier alnifolia</i> 'Northline'	Saskatoon—Northline	Edible fruit
	6	<i>Cornus mas</i>	Cornelian Cherry	Edible fruit
	3	<i>Lonicera ciliosa</i>	Orange Honeysuckle	Edible fruit
<b>Small Shrubs</b>				
	63	<i>Gaultheria shallon</i>	Lemon Leaf	Edible fruit
	50	<i>Vaccinium angustifolium</i>	Lowbush Blueberry	Edible fruit
	13	<i>Mahonia aquifolium</i>	Oregon Grape Holly	Edible fruit



This community is modelled after a vegetation community that grows natively in the Coastal Douglas Fir ecological site in western British Columbia. It is suitable if your goal is to create a perennial edible landscape that, once established, requires minimal to no inputs to survive. It features many of the edible plant species that are already adapted to the ecological region. The exception is the Cornelian Cherry, which will require more moist and moderate nutrient available ecosites in the community.



**5thWorld**



[www.5thworld.com](http://www.5thworld.com)



[@5th-world](https://www.linkedin.com/company/5th-world)



[@5thWorld\\_com](https://twitter.com/5thWorld_com)



[@5thworld\\_com](https://www.instagram.com/5thworld_com)



[@5thworld\\_com](https://www.youtube.com/5thworld_com)



[@5thworld\\_com](https://www.tiktok.com/@5thworld_com)